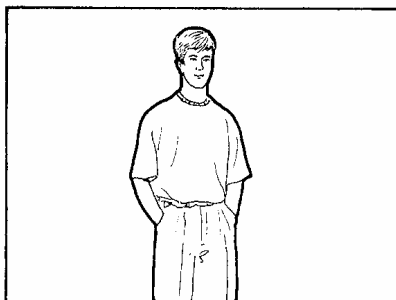


Framing the image

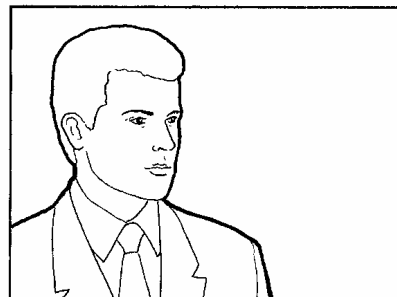
How to describe different framing choices and techniques



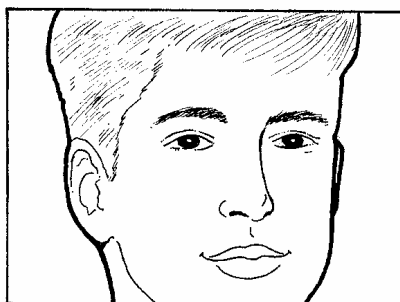
Extreme Close-Up (ECU)



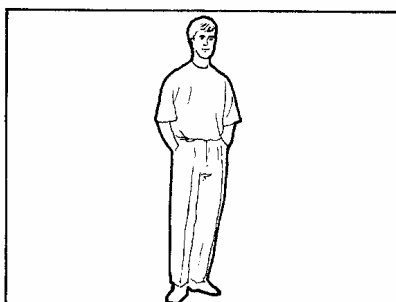
Medium Long Shot (MLS)



Looking room (Interviewee looks into space in the frame, towards the interviewer)



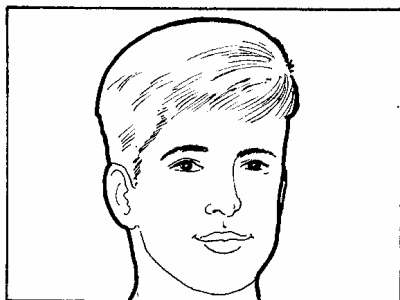
Big Close-Up (BCU)



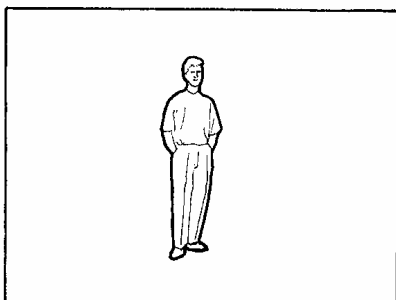
Long Shot (LS)



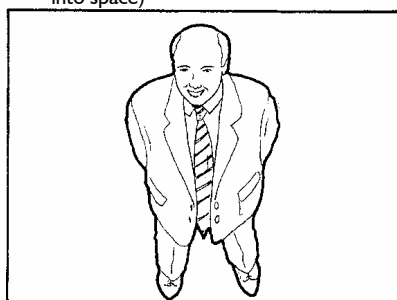
Walking room (Moving subject walks into space)



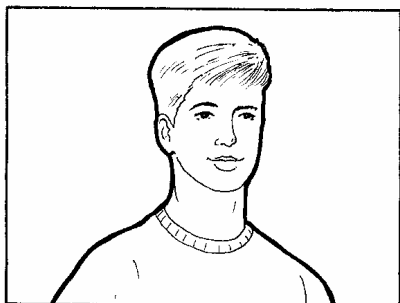
Close-Up (CU)



Very Long Shot (VLS)



High Angle Shot (looking down)



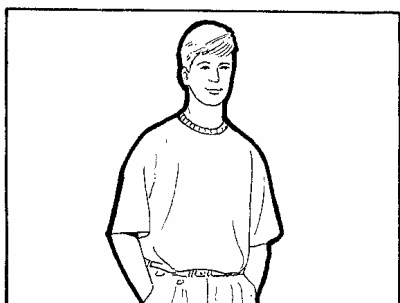
Medium Close-Up (MCU)



Two Shot (could be CU/MCU/MS)



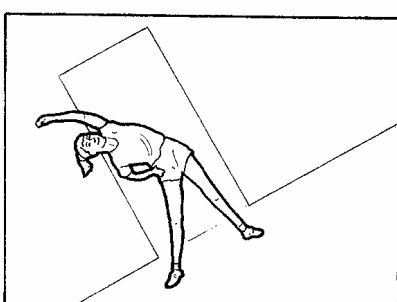
Low Angle Shot (looking up)



Medium Shot (MS)



'Over the shoulder shot'



Tilted Frame